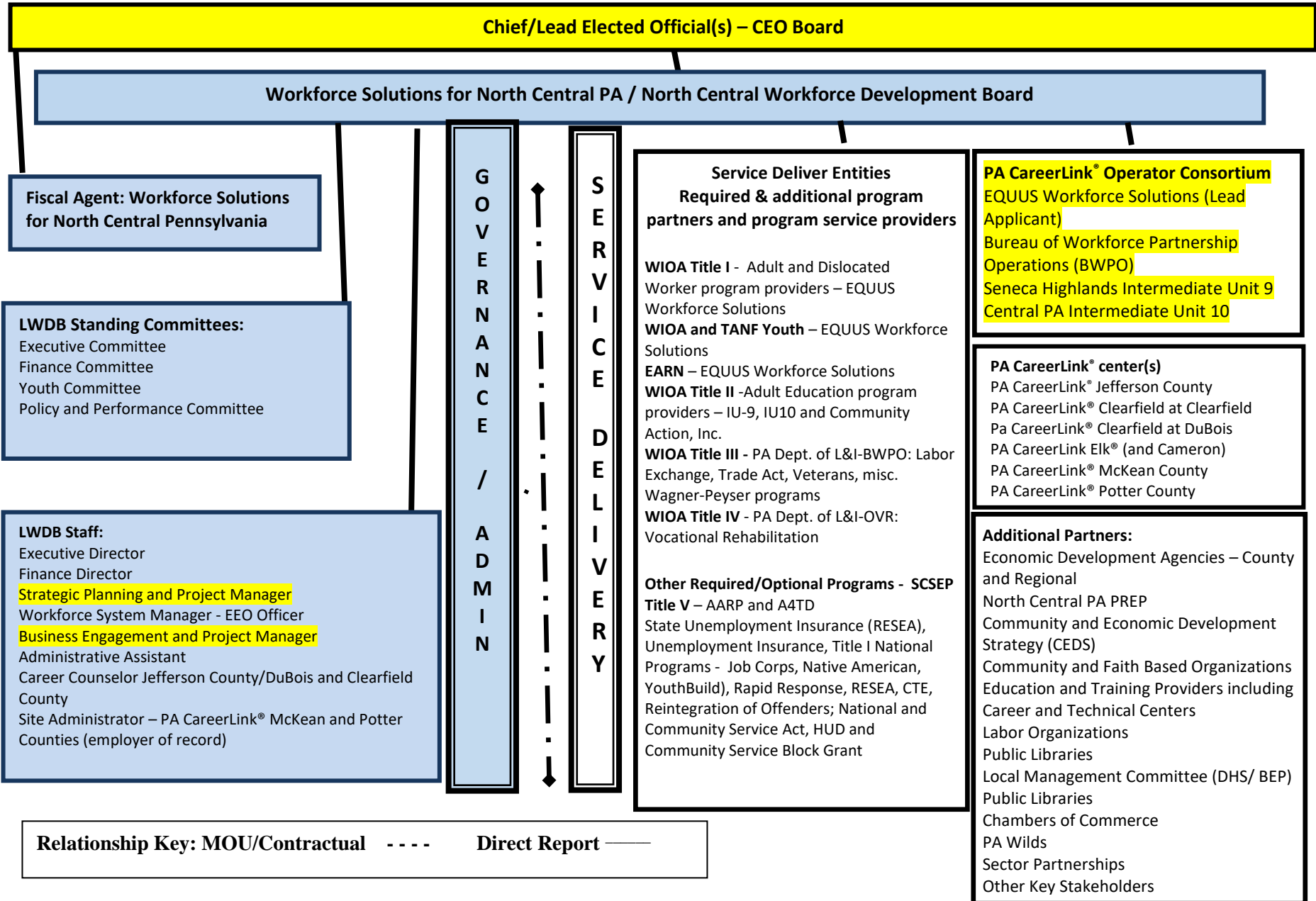


Attachment 2: PY 2021-2024 WIOA Multi-Year Local Area Plan: – North Central Workforce Development System Organizational Chart – Modification 1

Local Workforce Development Area name: _____ North Central _____ Effective Date: _____ April 6, 2022 _____



Local Workforce Development Boards (LWDB) are requested to publically post the Local Workforce Development Area Workforce System Organizational Chart. The LWDB should ensure that the org chart is a reasonable reflection of the local area workforce system. If the Program Partner/Provider List is posted the need for program partner details is lessened in the org chart. Local area plan modifications concerning this subject matter are not required to be submitted to the Department if the chart is posted on the LWDB public website. Page 1 of 1